



Setting the **standard** since 1987.



Peak Beam Systems, Inc.  
3938 Miller Rd., Edgemont, PA 19028  
Phone: 610-353-8505 • Fax: 610-353-8411  
Web: [www.peakbeam.com](http://www.peakbeam.com) • [sales@peakbeam.com](mailto:sales@peakbeam.com)

Proud to be made in the **USA**.  
Copyright © 2011 Peak Beam Systems, Inc.

**MAXA**  
**BEAM**  
by **PEAK BEAM SYSTEMS, INC.**

The **Best** Searchlight Systems in the World.

## The most powerful handheld searchlight ever built.

The Maxa Beam Searchlight is a lightweight, high intensity illumination device with an unparalleled output of 12,000,000 Peak Beam CandlePower. The Maxa Beam has been battle-tested by the United States Armed Forces and numerous foreign and domestic government agencies for over twenty years.



Handheld Maxa Beam Searchlight systems feature lightweight, long-running Lithium-Ion batteries and an easy-to-use joystick-style control of the searchlight's beam width, beam intensity, and strobe function. The searchlight's rugged design and long illumination range make it the tool of choice for search and rescue, covert surveillance, escalation of force, and tactical operations.

## Effective non-lethal device.

The Maxa Beam Searchlight assists operators in achieving the following escalation of force (EoF) objectives:

### DETERRENCE:

Intruders are less likely to enter brightly illuminated perimeters, vessels, and other areas of interest.

### DETECTION:

The Maxa Beam's long range, focusable beam of light aids with identification of targets.

### OCULAR DISRUPTION / DISORIENTATION:

The Maxa Beam's powerful output immediately impairs a target's ability to see and operate at night.



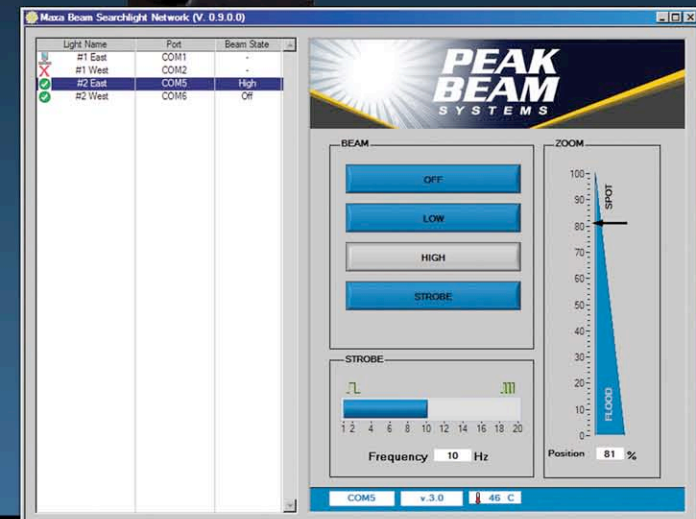
## Unparalleled remote control options.

The Maxa Beam is unique in that all searchlight functions including beam width adjustment and strobe can be remotely activated.

Remote control options include a waterproof remote control box (far right) and a Graphical User Interface software program for computer control (left).

## All Maxa Beam searchlights feature:

- 12,000,000 Peak Beam CandlePower Output
- Motorized, Remote-Controllable Beam Width Adjustment
- Focusable Long Range Illumination (3500m Visible / 1400m IR)
- Strobe Function for Ocular Disruption & Target Disorientation



◀ Use the included GUI Control Software to remotely operate the MBPKG-E Series Environmentally Sealed Searchlight.

MBS-410 Series Searchlight on Fluid Pan/Tilt Head. ▶



From top right: MBS-430-W Series Searchlight on computer-controlled EoF/weapon station; MBPKG-E Series Searchlight on a remotely monitored U.S. Border Patrol tower; MBS-430-Y Series Searchlight and Wired Remote Control; MBS-430-W Series Crew-Served Weapon Light on a .50 caliber machine gun. ▶

